

<b>1. Runtime Changes.....</b>	<b>2</b>
1.1 DAVIE Global PACCAR support .....	2
1.2 Administrator Password after first start up changed.....	2
1.3 Dealership code changed to User code .....	3
1.4 Save & restore usernames.....	3
1.5 LOG-files / PDF-printer .....	4
1.6 First language is leading after installation .....	4
1.7 ECS-DC4 waiting time after crashed programming .....	5
1.8 Portuguese language .....	5
1.9 Guided Health check .....	5
<b>2. Softing VCI.....</b>	<b>6</b>
2.1 Update of Softing VCI firmware and wireless adapter .....	6
2.2 VCI configuration manager .....	6
2.3 The WLAN Quality Indicator .....	7

## 1. Runtime Changes

### 1.1 DAVIE Global PACCAR support



PACCAR MX-NA engine

Since begin 2008 the DAVIE XDc II has also been used for all PACCAR truck brands.

Now the DAF DAVIE Development Team develops 12 applications for different 'customers'.

2 After Sales application versions:

- DAF After Sales
- PACCAR After Sales

10 Production application versions.

- 3 DAF Eindhoven sites
- 1 DAF Westerlo site
- 3 DAF Leyland sites
- 3 PACCAR North America sites

### 1.2 Administrator Password after first start up changed

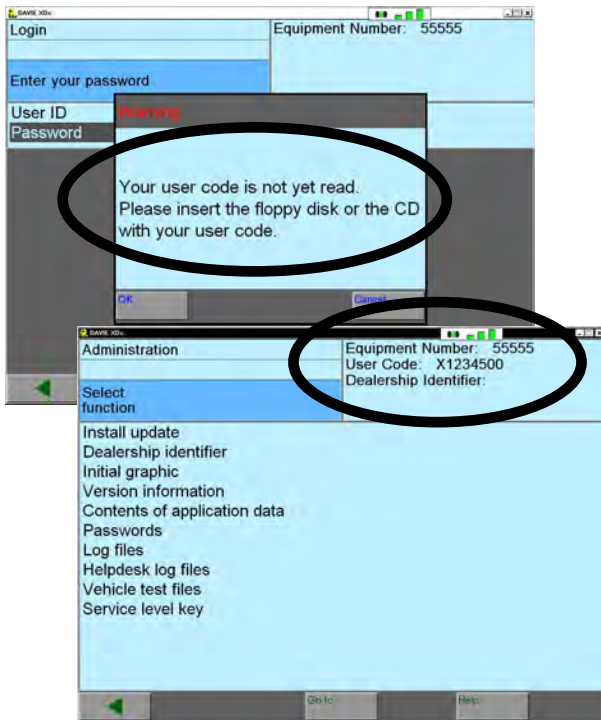
User ID: ADMIN  
Password: ADMIN



Since the DAVIE XDc II is being used by the complete Paccar company, the default Admin password "DAF" has been changed to "ADMIN".

This means that after the first start up of the DAVIE program the password "ADMIN" needs to be used.

### 1.3 Dealership code changed to User code



Since the DAVIE XDc II is being by the complete Paccar company, the "Dealership code" has been changed to "User code".

#### DAVIE XDc II

With introduction of the Softing VCI every DAVIE XDc II received a new User code which is located on the USB-stick.



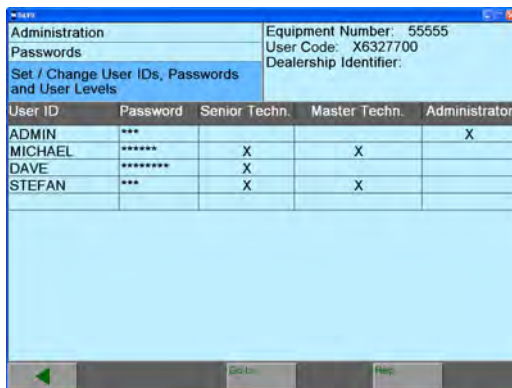
This grey USB-stick has been supplied in the Softing VCI case.

#### DAVIE XD & DAVIE XDc

If you still use the Siemens VCI, use the floppy disk.



### 1.4 Save & restore usernames



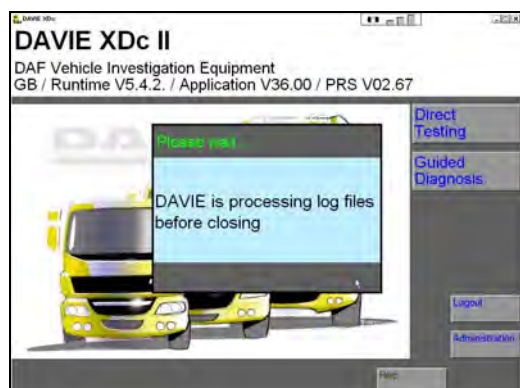
The screenshot shows the "Set / Change User IDs, Passwords and User Levels" screen. It displays a table with columns for User ID, Password, Senior Techn., Master Techn., and Administrator. The table contains the following data:

User ID	Password	Senior Techn.	Master Techn.	Administrator
ADMIN	***			X
MICHAEL	*****	X	X	
DAVE	*****	X		
STEFAN	***	X	X	

During the Runtime 5.4.2 installation or re-installation all usernames will be restored. (if available)

Some dealers have more than 25 users (with password) entered on their DAVIE's so they had to re-enter them manually.

### 1.5 LOG-files / PDF-printer



#### 1.5.1 Processing Log files while shutting down the DAVIE Program.

During shut down program the DAVIE log files will be processed. An extra pop-up will be shown until the log files have being processed.

#### 1.5.2 New version of the PDF-printer

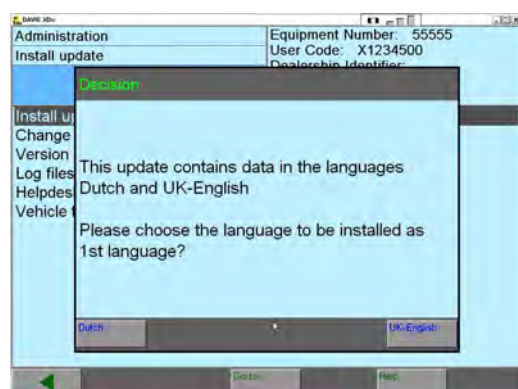
Several DAVIE tools in the field slow down due to a full printer queue. A new version of the PDF-printer will be installed during the Runtime installation to solve this problem.

#### 1.5.3 Restore default printer after creating log files.

During the processing of log files the printer is set to the DAF PDF printer.

If you close the Runtime, the default printer will be restored.

### 1.6 First language is leading after installation

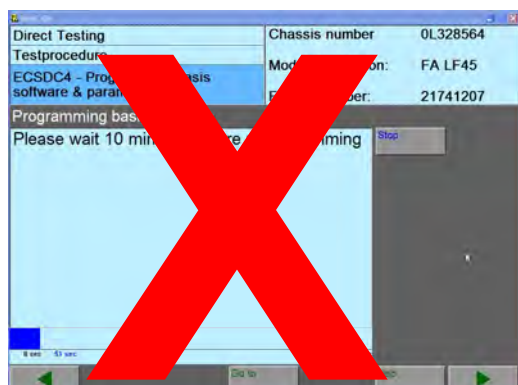


If you would like to install 2 languages at the same time, the first language will be active after installation.

This previously was the second language.



### 1.7 ECS-DC4 waiting time after crashed programming



When programming of ECS-DC4 was crashed, you had to wait 10 minutes to reprogram it.

With the introduction of the Runtime 5.4.2 the ECS-DC4 unit can be reprogrammed immediately.

### 1.8 Portuguese language



Portuguese language is now available for the DAVIE program.

The language can be chosen during the application installation.

### 1.9 Guided Health check

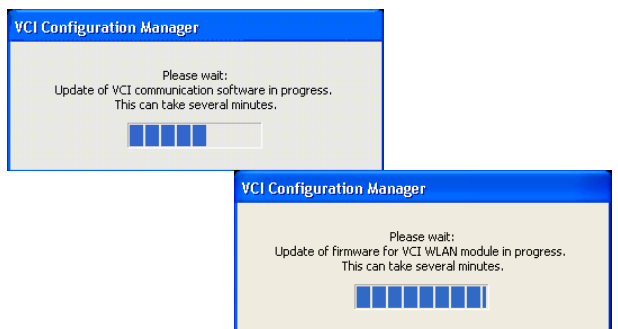


If a health check was performed in for instance guided diagnosis the error information was displayed from the system below.

With the introduction of the Runtime 5.4.2 this behaviour has been fixed. Now the fault codes are presented with the system they belong to.

## 2. Softing VCI

### 2.1 Update of Softing VCI firmware and wireless adapter



During the installation of Runtime 5.4.2 the Softing VCI will be updated with new software.

### 2.2 VCI configuration manager

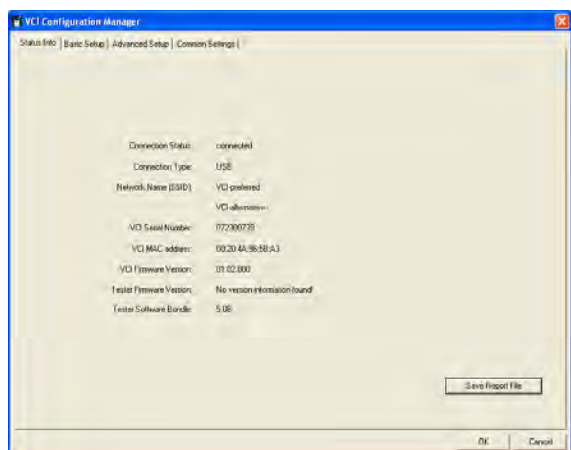
#### 2.2.1 Start-up



During startup of the VCI Configuration Manager an extra pop-up is shown.

This pop-up indicates that the Softing VCI needs to be connected via USB when the settings of need to be read out or changed.

#### 2.2.2 Order of Status information

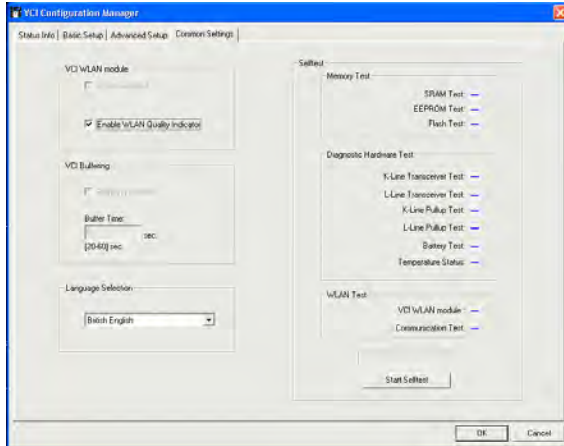


The order of the information on the Status Information tab has been optimized.

Connection Status, Connection Type and the Network Name have been place on top.

Therefore it's clearer which connection state is valid.

### 2.2.3 Grey text boxes



Some options can be greyed out in the VCI Configuration Manager.

1. If the user is not logged in as Windows administrator:
  - a. Basic Setup can not be used
2. When the Softing VCI is not connected via USB, only the next setting can be read out or changed:
  - a. Read out Tester firmware version
  - b. Read out Tester Software Bundle
  - c. Enable or disable WLAN Quality Indicator
  - d. Change the language of the VCI Configuration Manager

## 2.3 The WLAN Quality Indicator

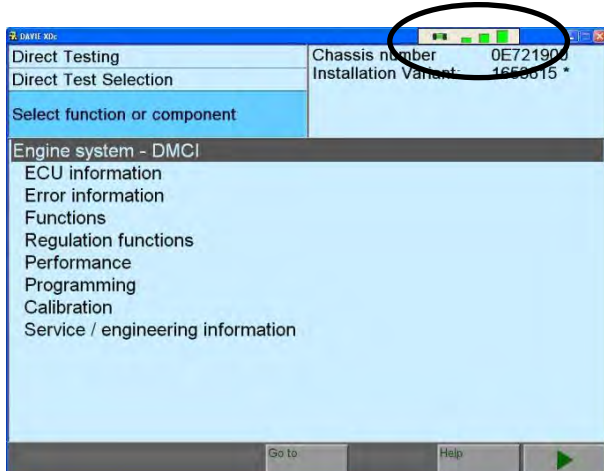
### 2.3.1 General

In order to detect interferences of the communication via wireless between the DAVIE laptop and the Softing VCI, the quality of the wireless connection can be observed. This is done by a small display which shows a rating of the wireless connection quality. The WLAN Quality Indicator is controlled by the VCI Tray Icon and the Configuration Manager.

It is updated every second. An average response time to changes of the connection quality of four seconds is aimed.



As long as the Softing VCI is connected via USB the display is switched off.

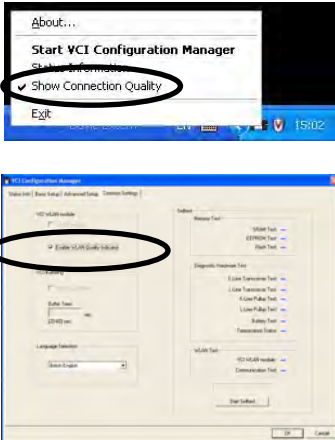


The WLAN Quality Indicator is also visible while the DAVIE application is running. Therefore it is always on top position. The appearance of the display dialog is adapted to the screen resolution.

After installation and when the *USB-cable is disconnected* the display is visible. The WLAN Quality Indicator can be moved and closed.

The location is stored so that at a restart the display is shown at the latest saved position.

### 2.3.2 Interface







The WLAN Quality Indicator can be turned on and off with the VCI Tray Icon. The context menu entry shows a check mark if the display is active.

The WLAN Quality Indicator can also be turned on and off with a check box of the “Common Settings” in the VCI Configuration manager menu.

### 2.3.3 Rating of the WLAN connection quality indicator

The quality of the wireless connection is subdivided into four categories.

The figure below shows the WLAN Quality Indicator with the mapping of the defined four quality categories to it.

	Green - Excellent	Wireless communication is possible with good data throughput.
	Yellow - Sufficient	Wireless communication is possible, reduced data throughput may occur.
	Red - Poor	No sufficient wireless communication.
	None - No connection	No wireless communication.



As long as the Softing VCI is connected via USB the display is switched off.